



**REGIONAL SPECIALISED METEOROLOGICAL CENTRE-TROPICAL CYCLONES, NEW DELHI
SPECIAL TROPICAL WEATHER OUTLOOK**

DEMS-RSMC SPECIAL TROPICAL CYCLONES NEW DELHI DATED 14.08.2022

SPECIAL TROPICAL WEATHER OUTLOOK FOR NORTH INDIAN OCEAN (THE BAY OF BENGAL AND ARABIAN SEA) VALID FOR NEXT 120 HOURS ISSUED AT 0600 UTC OF 14.08.2022 BASED ON 0300 UTC OF 14.08.2022.

DEPRESSION OVER NORTHWEST BAY OF BENGAL AND ADJOINING COASTAL AREAS OF WEST BENGAL & ODISHA

YESTERDAY'S WELL MARKED LOW PRESSURE AREA OVER NORTHWEST BAY OF BENGAL OFF NORTH ODISHA & WEST BENGAL COASTS MOVED SLIGHTLY WEST-NORTHWESTWARDS, CONCENTRATED INTO A DEPRESSION AND LAY CENTERED AT 0300 UTC OF TODAY, THE 14TH AUGUST OVER NORTHWEST BAY OF BENGAL AND ADJOINING COASTAL AREAS OF WEST BENGAL & NORTH ODISHA NEAR LATITUDE 21.7°N AND LONGITUDE 87.8°E ABOUT 10 KM SOUTHEAST OF DIGHA (42901) AND 90 KM EAST-NORTHEAST OF BALASORE (42895).

IT IS VERY LIKELY TO MOVE WEST-NORTHWESTWARDS AND CROSS WEST BENGAL & ADJOINING NORTH ODISHA COASTS CLOSE TO DIGHA DURING NEXT 6 HOURS. THEREAFTER, IT IS VERY LIKELY TO CONTINUE TO MOVE WEST-NORTHWESTWARDS AND MAINTAIN THE INTENSITY OF DEPRESSION DURING NEXT 24 HOURS.

AS PER INSTAD 3D IMAGERY AT 0300 UTC, INTENSITY OF THE SYSTEM IS CHARACTERISED AS T1.5. BROKEN LOW AND MEDIUM CLOUDS WITH EMBEDDED INTENSE TO VERY INTENSE CONVECTION LAY OVER NORTH BAY OF BENGAL, EAST ODISHA AND COSTAL GANGETIC WEST BENGAL. MINIMUM CLOUD TOP TEMPERATURE IS MINUS 93° C.

ESTIMATED MAXIMUM SUSTAINED WIND SPEED IS 25 KNOTS GUSTING TO 35 KNOTS. ESTIMATED CENTRAL PRESSURE IS 994 HPA. SEA CONDITION IS LIKELY TO BE ROUGH TO VERY ROUGH OVER NORTH BAY OF BENGAL AND ALONG & OFF BANGLADESH, WEST BENGAL, ODISHA AND ADJOINING NORTH ANDHRA PRADESH COASTS TILL 0000 UTC OF 15TH AUGUST .

REMARKS:

SEA SURFACE TEMPERATURE IS AROUND 28-29°C OVER NORTH BAY OF BENGAL. LOW LEVEL VORTICITY HAS INCREASED AND IS AROUND $150 \times 10^{-6} \text{ S}^{-1}$ OVER NORTHWEST BOB OFF WEST BENGAL COAST AND IS EXTENDING UPTO 200 HPA LEVELS. LOW LEVEL CONVERGENCE HAS INCREASED AND IS AROUND $30 \times 10^{-5} \text{ S}^{-1}$ OVER NORTHWEST BOB. POSITIVE UPPER LEVEL DIVERGENCE HAS INCREASED AND IS AROUND $30 \times 10^{-5} \text{ S}^{-1}$ OVER NORTHWEST BOB. WIND SHEAR IS LOW (05-10 KNOTS) OVER HEAD BAY OF BENGAL.

MOST OF THE NWP MODELS ARE UNANIMOUSLY INDICATING WEST-NORTHWESTWARDS MOVEMENT OF THE SYSTEM AND MODELS ARE ALSO INDICATING THE SYSTEM TO MAINTAIN IT'S INTENSITY DURING NEXT 24 HOURS.

(M. SHARMA)
SCIENTIST D,
RSMC, NEW DELHI



OBSERVED AND FORECAST TRACK OF DEPRESSION OVER NORTHWEST BAY OF BENGAL AND ADJOINING COASTAL AREAS OF WEST BENGAL & ODISHA BASED ON 0300 UTC OF 14th AUGUST, 2022



DATE/TIME IN UTC

IST=UTC + 0530

L: LOW PRESSURE AREA

WML: WELL MARKED LOW PRESSURE AREA

D: DEPRESSION (17-27 KT)

DD: DEEP DEPRESSION (28-33 KT)

CS: CYCLONIC STORM (34-47 KT)

SCS: SEVERE CYCLONIC STORM (48-63KT)

VSCS: VERY SEVERE CYCLONIC STORM (64-89 KT)

ESCS: EXTREMELY SEVERE CYCLONIC STORM (90-119 KT)

SuCS: SUPER CYCLONIC STORM (≥ 120 KT)

● LESS THAN 34 KT

○ 34-47 KT

○ ≥ 48 KT

— OBSERVED TRACK

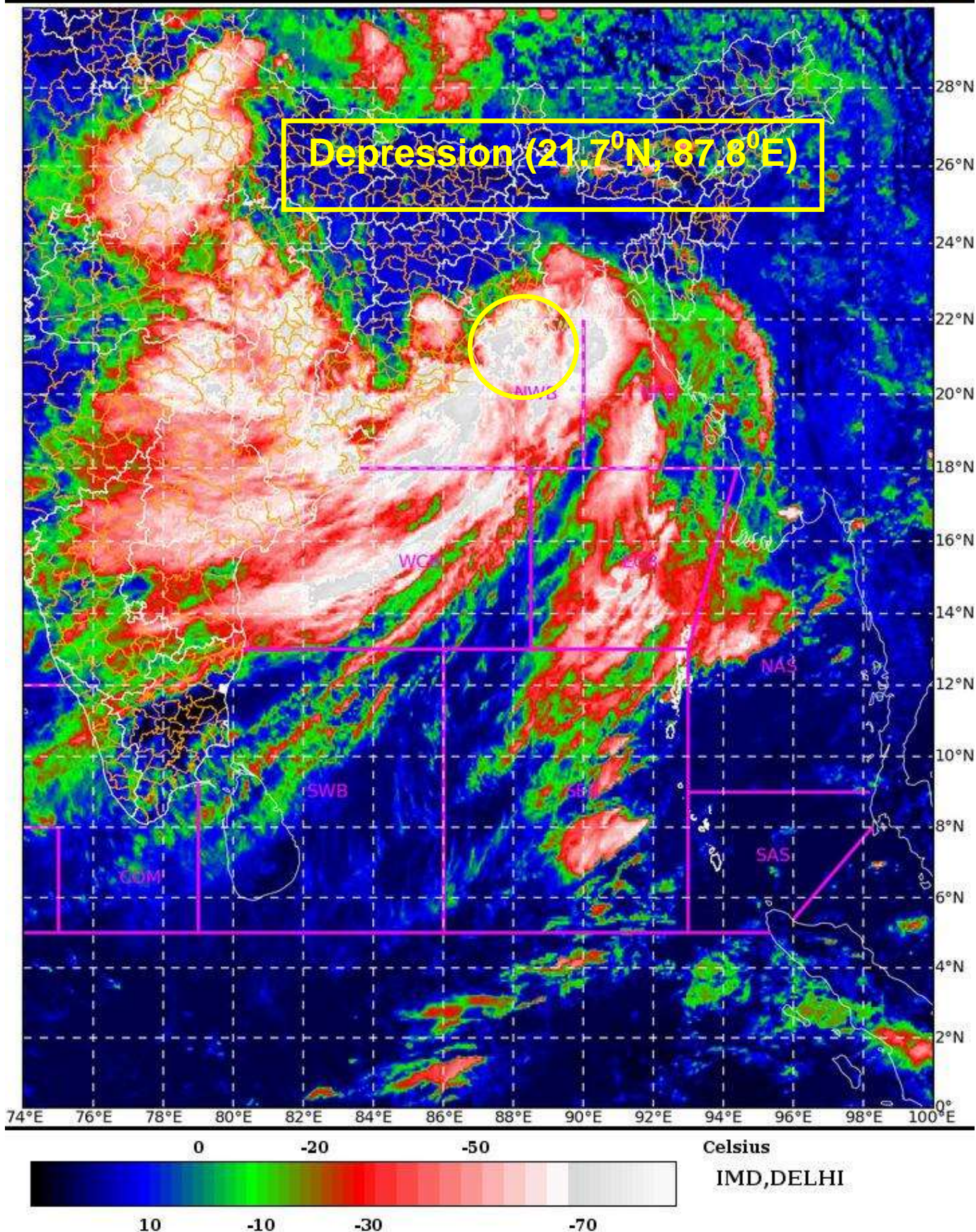
— FORECAST TRACK

▲ CONE OF UNCERTAINTY

SAT : INSAT-3D IMG 14-08-2022/(0530 to 0557) GMT

IMG_TIR1_TEMP 10.8 um 14-08-2022/(1100 to 1127) IST

L1C Mercator



Cloud distribution: (a) Isolated: <25%, Scattered:25-50%, Broken: 51-75%, Solid:>75%, Convection Intensity: (a) Weak: Cloud Top Temperature (CTT) >-25°C, (b) Moderate: CTT: - 25°C to -40°C, (c) Intense: CTT: - 41°C to -70°C and (d) Very Intense: : Less than -70°C
PROBABILITY OF CYCLOGENESIS (FORMATION OF DEPRESSION): NIL: 0%, LOW: 1-33%, MODERATE: 34-66% AND HIGH: 67-100%
This is a guidance Bulletin for WMO/ESCAP Panel Member countries. Visit respective National websites for Country specific Bulletins